

LONDON BOROUGH OF BARNET

DIRECTORATE OF ENVIRONMENT AND OPERATIONS

**ADOPTION OF HIGHWAYS MADE UP UNDER SECTION 38
OF THE HIGHWAYS ACT 1980**

Name of Development: Adastral South Development NW9 (off Lanacre Avenue)

Description:

Kenley Avenue-

a) 6.5metres wide carriageway with 2 metre wide footways and 1.8m wide footways either side. Including one 2.4metre wide layby of length 15 metres. Length offered for adoption 189metres

b) 3.6 metres wide carriageway with a 1.8metre wide footway including three 2.4metre wide laybys of total length 89 metres. Length offered for adoption 169 metres).

(Total length of Kenley Avenue offered for adoption 358 metres)

Lyneham Drive- 4.8metres wide carriageway with 1.0 metre wide service strip either side. Length offered for adoption 168metres.

Warmwell Avenue-4.8 metres wide carriageway with a combination of 1.0 metre wide service strip either side. Length offered for adoption 119metres

Coningsby Avenue-4.8 metres wide carriageway with a combination of 1.0 metres wide service strip either side. Length offered for adoption 100 metres

Marham Drive-4.8 metres wide carriageway with 2.4m wide laybys each 26 metres in length and 2.0metres wide footways either side. Length offered for adoption 57 metres

Debden Close-4.8 metres wide carriageway with a 1.0 metres service strip either side. Length offered for adoption 50metres

Holbeach Close-4.8 metres wide carriageway with 1.0 metres wide service strip either side. Length offered for adoption 63 metres

Martlesham Walk- Approx 3.5 metres wide footpath. Length offered for adoption 376 metres

The above adoptable areas are highlighted on the attached drawing in pink

File No: Adastral South

Drawing No: Bellway Homes drawing no 312/S38/1B

Agreement Date: 17 May 2010

Constructed by: Bellway Homes Ltd, Seaton Burn House, Dudley Lane, Seaton Burn, Newcastle Upon Tyne

The maintenance period has now expired and all works have been carried out to my satisfaction. Under the powers delegated to me, I formally adopt the above named road as a highway maintainable at public expense as from **15 October 2010**.

Copies of the agreement and plans are held by the Head of Legal at North London Business Park.



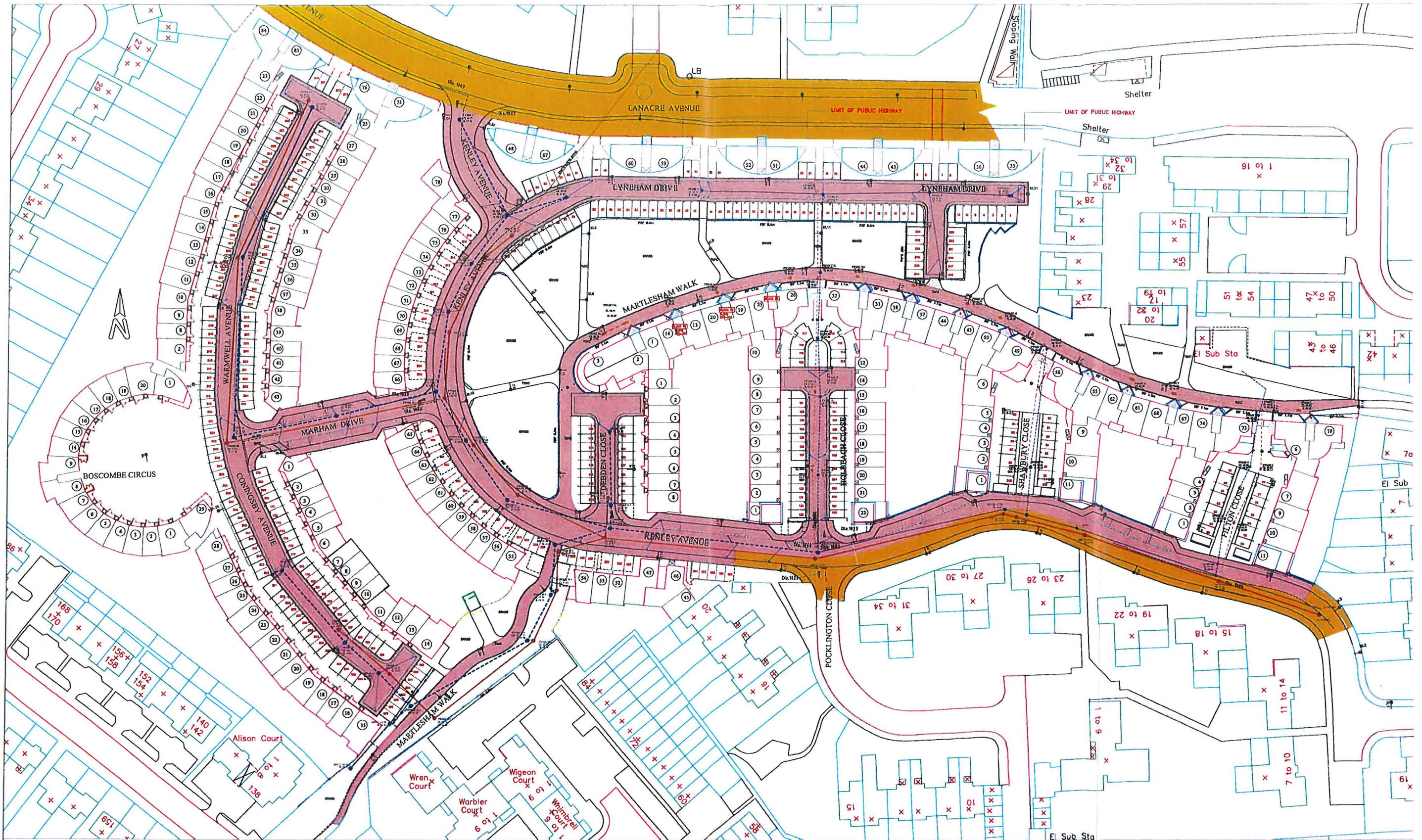
Interim Director of Environment and Operations

14ⁿ October
2010.

Dated

Cc

Head of Legal (Law and Probity) – Margaret Martinus
Local Land Charges Officer – Michelle Mungwengwe
Street Cleansing and Ancillary Service Manager – Dave Ward
Refuse Service Manager – Bob Cripps
Thames Water Utilities Ltd – Peter Fossey
Strategic Information – James Crossingham
Community Protection Group Manager -Paul Lamb
Business Support Manager - Premila Rabadia
Parking Enforcement – Jose Garcia
Parking Manager- John McArdle
Acting Highway Manager (T&D) - Neil Richardson
Highways Manager (Network Management) – Paul Bragg
Senior Engineer Street Lighting– Richard Bergman
Senior Engineer Highways Maintenance - Mark Cooper



- S38 Highways Adoptable areas
- S38 Adoptable gullies & connections
- Surface Water sewer
- Foul sewer
- Adoptable street lights & height
- Postal Numbers
- Existing Highway
- Lockable bollards
- Fixed bollards

Belway

Belway Homes, Belway House, Bury Street, Bury, MAN 7SD
Tel: 01496 871100 Fax: 01496 871111

Site Location: Adastral South

Drawing: S38 Adoption Plan

Scale: 1:500 Date: May 2008

Drawing No.: 312/S38/1B Drawn: DWK

■ 08.10.10 Bollards added
 A 21.02.09 St Light numbers added